

The lagoon of Venice combines both extremely refined architecture originating from its position between oriental and western civilisations, and primary landscape born when life was only amphibian. A gigantic contrast that gives this territory an extra-ordinary dimension.

It is J.M.W. Turner painting Venice through the mist of the lagoon.

Our proposal leads you to imagine the site of Sacca San Mattia as the extension of a natural and wild landscape. Thus, as you cross the boundaries of the city, you will be able to experience a world which, until then, lay too far out in the lagoon, off tourist tracks.

The park of Sacca San Mattia will as much as possible be designed by nature itself.

To facilitate reconquest, the old wasteland will be reshaped, less high, closer to the water and allowing it to flow through. The contours will be less precise, more blurred.

To achieve this, the bank will be punctuated with a network of wooden poles that will retain sediments, propitious to the formation of an amphibian ecosystem.

In time, the network will disappear under the marshes. But, here and there, some of the poles will still stick out like the *bricolles* that delimit the canals in the lagoon. We will use them as moorings for our lagoon prototypes.

Altanas float on the roofs of Venice.

Altanas are small wooden terraces fixed on the roofs of buildings. These light structures allow a breath of fresh air on hot summer evenings, but mostly provide distance to admire the city.

The lagoon prototype repeats this Venitian archetype.

The altanas will now float above the lagoon.

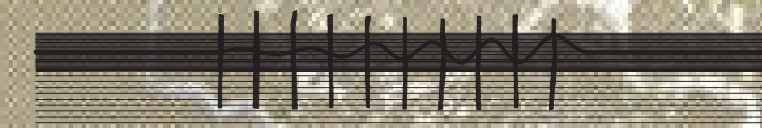
And like urban altanas they will top a home, a gite, partly buried in the ground, hidden, almost invisible. Our lagoon prototype aims at making us sense the intimacy of the lagoon in all its dimensions.

It offers two points of view: **from inside**, in this ambiguous part-water, part-earth place, **and from above**, in the haze and the sea breeze: **the batrachian and the wader.**

_lagoon today



_network installation



_sedimentation 1



_sedimentation 2



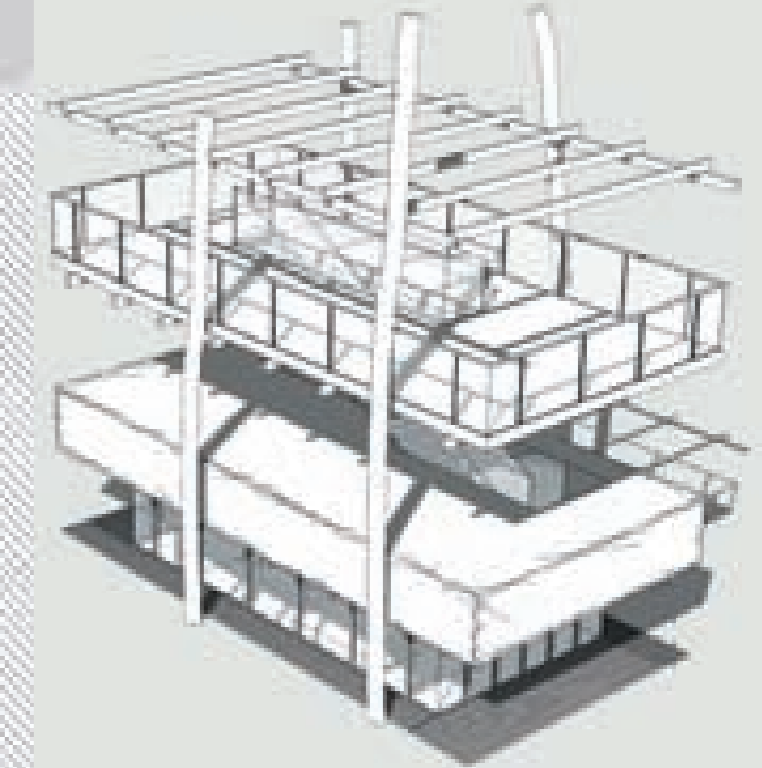
_growing



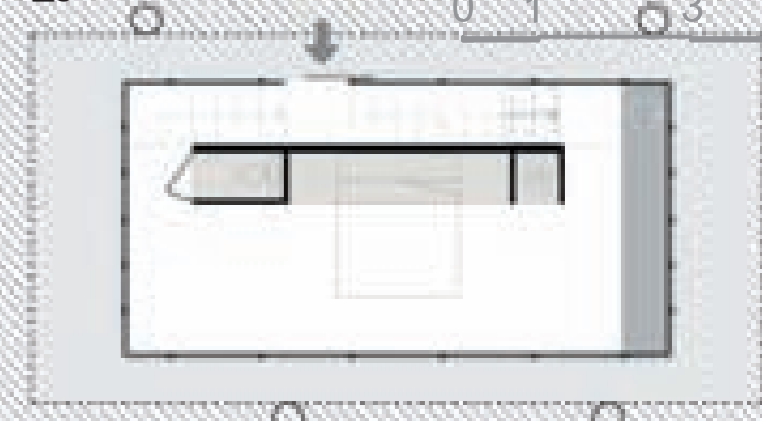
_landing



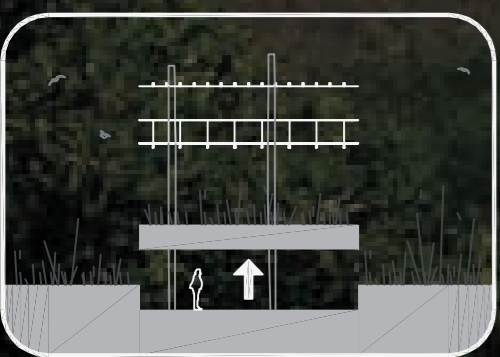
_the lagoon prototype



_ground level -1m



THE BATRACHIAN & THE WADER



_lagoon prototypes at dusk

This park is first of all an educational site to see and understand the lagoon in its ecosystem. Several paths are created. Several tracks of varying complexities open walks to hikers and joggers of all levels.

Finally, as a starting point and a first viewpoint onto the lagoon, a building is erected to harbour the infrastructures that such ecotourism involves. The airy building is set slightly outside the park, on the waters.

It serves as a landmark to the whole lagoon. As you sail from the airport or from Venice, you see it spring out of the mist as a thin horizontal line that slightly vibrates to the rhythm of the bricolles.

Here is the door to the lagoon park of Sacca San Mattia.



_footpath over the lagoon



_footpath across the marshes

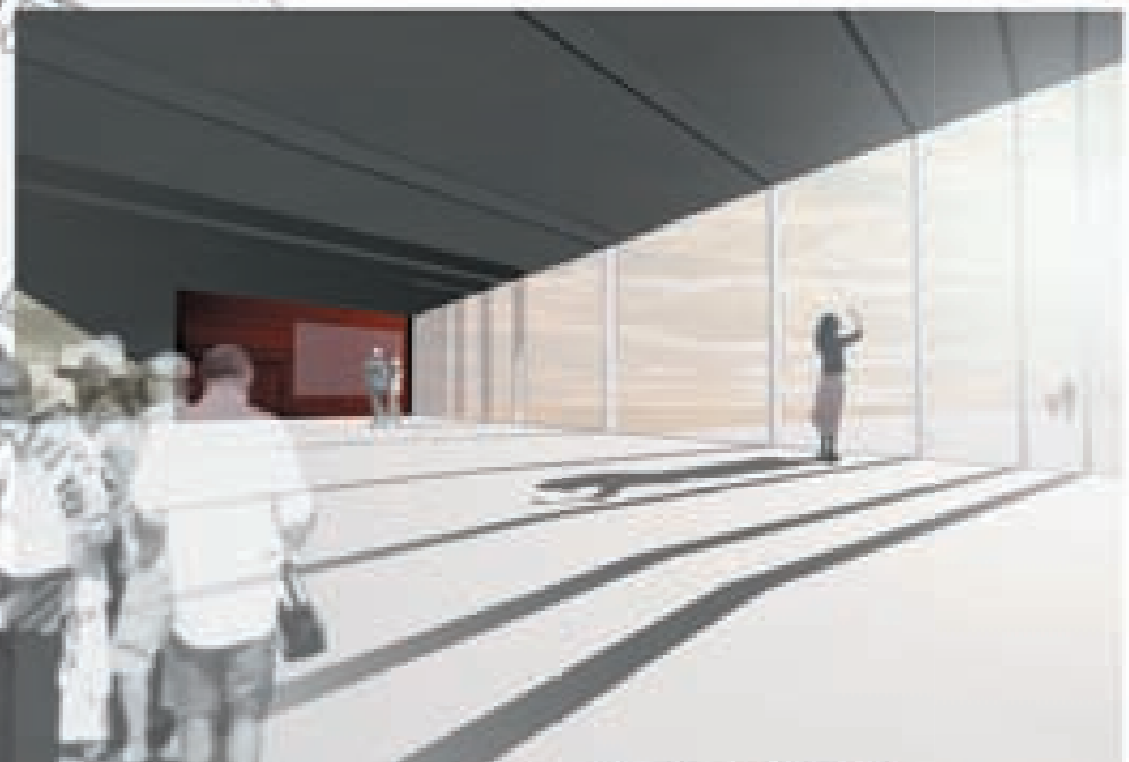


_diagonal footpath above the park

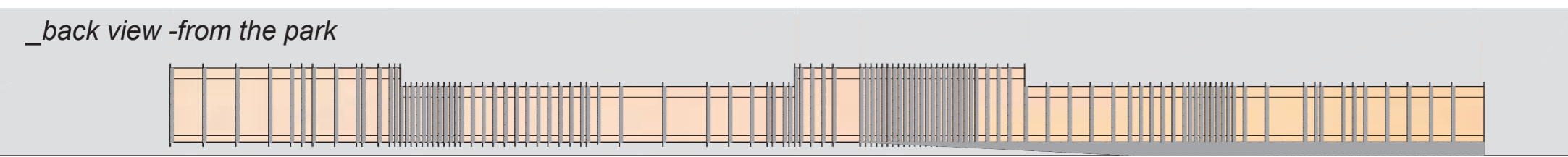
TO MARCO POLO AIRPORT

TO VENICE

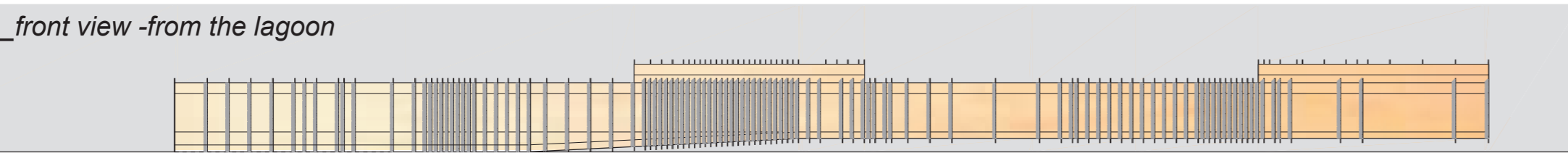
0 30 100 300 600



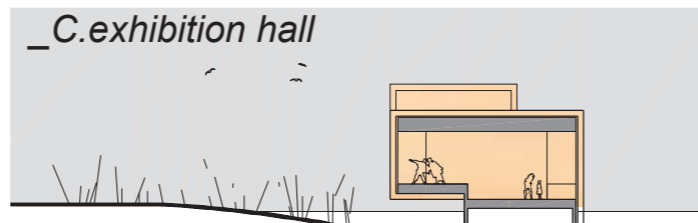
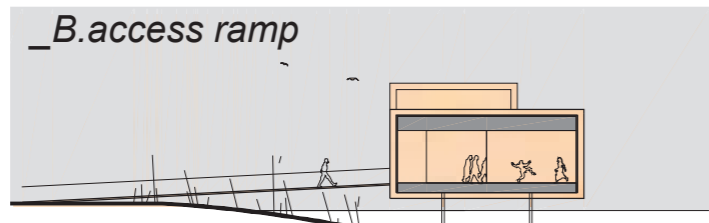
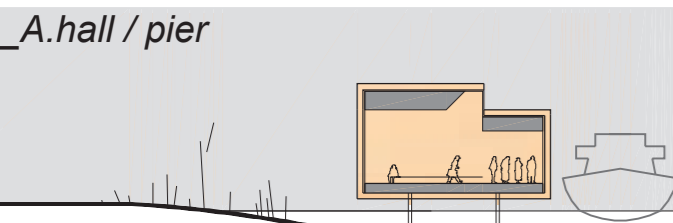
inside the agora



_back view -from the park



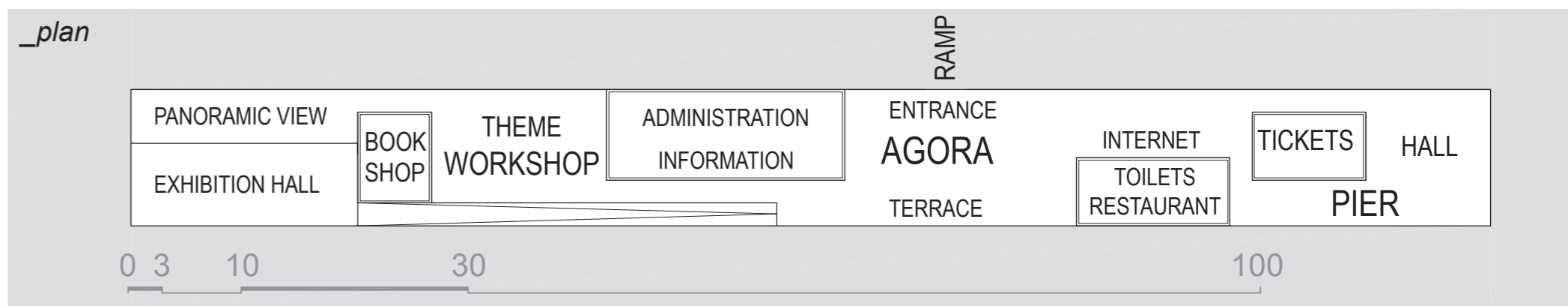
_front view -from the lagoon



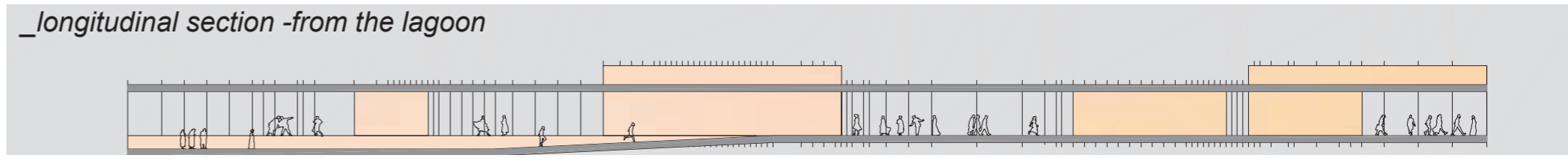
_A.hall / pier

_B.access ramp

_C.exhibition hall



_plan



_longitudinal section -from the lagoon



_a landmark on the lagoon

